



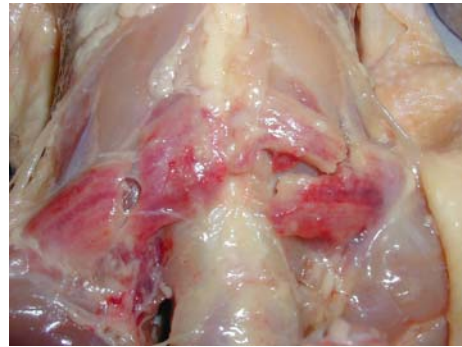
# W O G S

## Worthwhile Operational Guidelines & Suggestions

BROILER PROCESSING TIMELY INFORMATION – APRIL 2012

### A new myopathy in broilers?

Recent observations from several countries, including the USA, describe a new type of myopathy affecting the Anterior Latissimus Dorsi muscle (ALD is similar to the mammalian trapezoid) in broiler chickens. The bilateral ALD muscle bands originate from the thoracic dorsal midline and attach onto the upper wing (humerus). The primary function of the ALD is to hold the wings against the trunk and prevent the wings from drooping. The ALD muscles are made up of primarily slow aerobic tonic fibers, which contract slowly and are fatigue resistant.



F. C. Zimmermann (2008)\* used the term “Dorso Cranial Myopathy” to describe the degenerative changes associated with the ALD muscles. Lesions are often bi-lateral and include: mild petechial to severe hemorrhage, citrine color edema, thickening of the muscles, mild to severe necrosis, and fibrosis. The skin overlying the muscle is usually discolored (yellow-red) and can be easily detected by a trained eye on the processing line. Mild secondary inflammation may also be observed. Whether the DCM is a manifestation of a hereditary muscular dystrophy, a lesion due to a nutrient deficiency (vitamin E/selenium), a toxic degeneration (ionophore; copper), or simply a myopathy triggered by a sudden physical exertion have not been fully elucidated.

*\*Miopatia dorsal cranial em frangos de corte: Caracterizacao anatomopatologica, colheita e analise de dados. MS Thesis. University of Rio Grande do Sul*



Contact: **S. F. Bilgili, PhD.**

Phone : (334) 844-2612

E-mail : [bilgifs@auburn.edu](mailto:bilgifs@auburn.edu)

Poultry Science Department  
Auburn University, Auburn, AL 36849-5416  
[www.ag.auburn.edu/dept/ph/](http://www.ag.auburn.edu/dept/ph/)

